



LIDAR SWISS

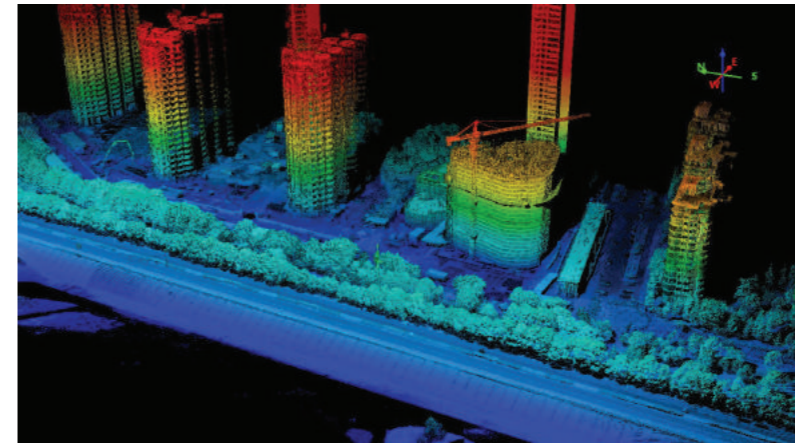
MOBILE LASER SOLUTIONS



LS Glidar V16 is a compact size Lidar aircraft solution specially designed to meet the small area survey market. The LS Glidar V16 includes all components of the LS Nano V16 with optional RGB possibilities.

Because the take off weight is only 7.2kg the CAA and FAA flight permits will be no complex procedure!

Easy-to-operate features ensure the LS Glidar V16 to generate desirable result even with the minimal training. Coupled with LS Geo-LAS software to process the acquired data, measurable terrain models can be derived in very short time.



Typical Applications

- Powerline inspection/danger tree analysis.
- River bank & coastal lines mapping.
- Water resources monitoring.
- Quick response mud slide analysis.
- Disaster management.
- Other 3D data applications.

Features Lidar

- 300khz Pulse rate, 16 laser heads
- 360 deg FOV
- 1-20hz scan rate
- MEMS IMU
- 20mp RGB (Optional)
- Rugged system controller
- Autonomous operation
- One button startup
- Weights 7.2kg
- Fits small size pelican case
- Operating range 80m
- Up to 100pts/m2



Features Aircraft

- ◆ Endurance 40minutes (including Lidar).
- ◆ Full autonomous flight capability.
- ◆ Ready to fly in 15 minutes.
- ◆ User friendly GCS software for mission planning.
- ◆ Take off weight 7.2kg (including lidar).
- ◆ Max cruise speed 50km/h.

Item

- Laser class
- Wave lenght
- Laser beam divergence angle
- Scanning range
- Scanning angle
- Pulse rate
- Point desity
- Scanning mechanism
- Pitch/Roll accuracy
- Heading accuracy
- Recording media
- Storage capacity
- Single scanning swath
- Image dimension
- Effective operating range
- Voltage
- Power consumption
- Weight
- Working temperature
- Storage temprature

Specification

- 1 class, eye safe
- Near Infrared
- 0.5 mrad
- 5m to 100m
- User selectable to 360deg
- 300KHz
- Up to 100+pts/m²
- Rotating laser head
- 0.05 deg
- 0.1 deg
- Win 10 system controller
- 128Gb
- Up to 200m
- 20 MP (Optional)
- Conductors: 25m/other objects: 80m
- 12 - 30V
- 57W (Max.)
- 2.3kg incl. cables
- 0 C to 40 C
- 0 C to 50 C

