

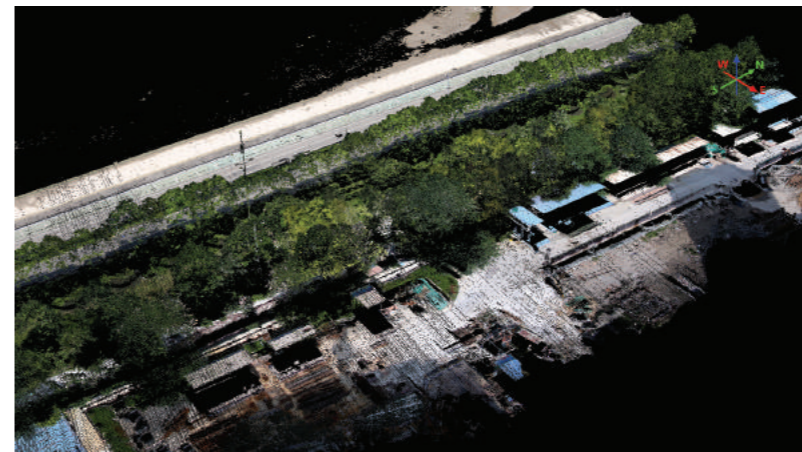


LS Micro Vux CE + is the lightest generation Long Rang LIDAR solution, a product suitable for both corridor and area mapping.

Based on the Riegl VUX-1LR, survey grade IMU, and a 50mp calibrated industrial camera fully integrated.

It can be operated at higher altitudes and covers more area on either manned, unmanned platforms or for mobile mapping.

LS Micro Vux CE + Automatically collects highly accurate laser and image data via its onboard system controller. It can produce DOMs, DEMs, DSMs and DTMs which may be further processed to produce 3D models for various industries.



Typical Applications

- Powerline inspection/danger tree analysis.
- River bank & coastal lines mapping.
- Water resources monitoring.
- Quick response mud slide analysis.
- Disaster management.
- Other 3D data applications.

Lightest Weight Long Range Lidar.
Perfect solution for multirotor and helicopter uav's.

Features

- 820khz Pulse rate
- 330 deg FOV
- 1-200hz scan rate
- Stim 300 IMU
- 50mp calibrated camera
- Rugged system controller
- Autonomous operation
- One button startup
- Weights 4.8kg
- Fits medium size pelican case
- Operating range 1350m
- Up to 400pts/m²
- Installation in minutes



- ◆ Area and corridor 3D data acquisition
- ◆ Terrain modelling for precision farming
- ◆ Stockpiles & volumetric calculations

- ◆ Historical site modelling
- ◆ Other corridor mapping
- ◆ Rapid and accurate distance measuring

Item

- Laser class
- Wave lenght
- Laser beam divergence angle
- Scanning range
- Scanning angle
- Pulse rate
- Point desity
- Scanning mechanism
- Pitch/Roll accuracy
- Heading accuracy
- Recording media
- Storage capacity
- Single scanning swath
- Image dimension
- Effective operating range
- Voltage
- Power consumption
- Dimension (LxWxH)
- Weight
- Working temperature
- Storage temprature

Specification

- 1 class, eye safe
- Near Infrared
- 0.5 mrad
- 5m to 1350m
- User selectable to 330deg
- 820KHz
- Up to 400+pts/m²
- Rotating mirror
- 0.006 deg
- 0.019 deg
- Win 10 system controller
- 256Gb
- Up to 1350m
- 50 MP
- Conductors: 150m/other objects: 750m
- 12 - 30V
- 85W (Max.)
- 28.5cm × 18cm × 12.5cm
- 4.8kg
- 0 C to 40 C
- 0 C to 50 C

